

Steve Massey, Te Rūnanga o Ngāi Tahu, “Implementing interactive digital maps” (Steve.Massey@Ngaitahu.iwi.nz)

- OBIS (Ocean Biogeographic Information System) demo, <http://obis.niwa.co.nz>
- FBIS (Freshwater Biodata Information System) demo, <http://fbis.niwa.co.nz>
- WQIS (Water Quality Information System) demo, <http://wqis.niwa.co.nz>
- Architecture: Arc IMS, Arc SDE, IBM IDS, Java, Apache
- Other issues
 - Lessons learned
 - 180 degree line problem
 - Eastings/northings and the Chatham Islands
 - GIS continuum with web maps at 1 end and sophisticated GIS (hydro object model) at the other
 - Open layers (Open Source client tools to access and use digital assets) and UMN map server (Open Source map server)
 - The GIS “iceberg” – don’t underestimate the data management and software development effort
 - The future: OGC and open source, Web Map Services

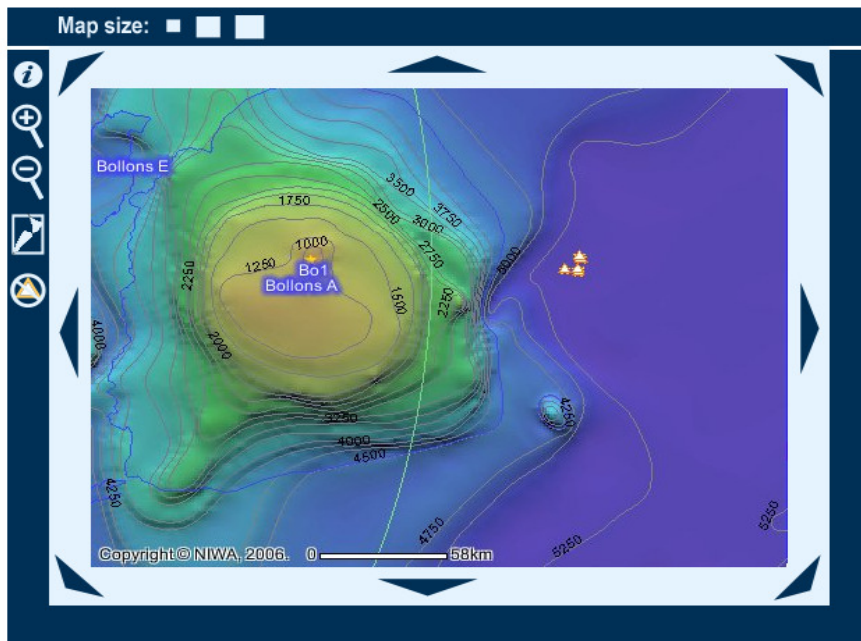
Screen shot of OBIS at work -

Map View

To find out more information about data collected in an area, click on a search tool and then draw a box around the area of interest. (To speed things up, points are not displayed until the map is zoomed in quite a bit.)

Records that match your search criteria are displayed as triangles on the map, whereas stars on the map relate to records from the selected data source that did not match your search criteria.

Using the browser's Back button to navigate to other parts of the site may cause unpredictable results. Please use the Forward button to return to this page.



Genus	Species	Locality	Sample start date	Phylum	Start latitude	Start longitude	Related Data
Caelorinchus	fasciatus	South East Chatham Rise	1995-10-21		-44.487	184.7423	Related Sampling Effort
Diastobranchus	capensis	South East Chatham Rise	1990-11-15		-44.5352	184.7898	Related Sampling Effort

Search Tools

- [View sample details](#)
- [Common spatial search](#)
- [Custom spatial search](#)

Features to show

- sample points
- seamounts
- 12 mile limit
- Fisheries Management Area
- EEZ
- bathymetry